

High quality, robust feeders - reliability and durability
 Choose from: Standard rotary • High speed sheet feeder • Shuttle feeder

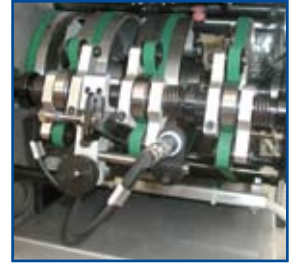


Rotary insert feeder featuring suction cups, single gripper and rotary drum.

- Minimum thickness: 70gsm
- Maximum thickness: 8mm



Disk attachment for processing open edge inserts on the rotary feeders.



Double and mis-feed detection.

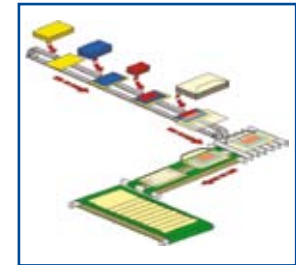


The shuttle feeder can be interchanged with the rotary feeders and allows for the feeding of catalogues and CDs.

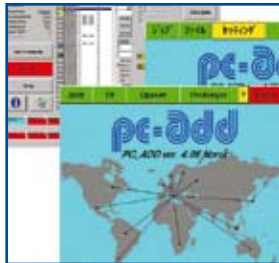
- Minimum thickness: 1mm
- Maximum thickness: 10mm



Automatic divert bin
 Integrated vacuum belt allows installation of ink-jet technology for addressing, messaging, postal information etc.



Continuous motion reduces stoppages and boosts productivity.



Intelligent control module (PC-Add)

- Inserts may be added selectively - controlled by either a database or barcode
- Management of up to 10 barcode readers and/or camera systems simultaneously
- Matching control between readers
- May be used to control automated bundling of output with Post Code breaks etc.
- Allows integration of common ink jet technology on the output belt - Read and Print functionality available
- Multiple language options

DPS 400 - General Specification

Minimum envelope format:	100mm(h) x 180mm(w)
Maximum envelope format:	160mm(h) x 330mm(w)
Maximum thickness:	10mm
Maximum production speed:	C6/5 20,000 env/h C5 18,000 env/h



Pitney Bowes Limited

Minton Place
 Victoria Street
 Windsor
 Berkshire
 SL4 1EG
 Tel: +44 (0) 1753 848200
 Fax: +44 (0) 1753 621140
 email: enquiries@pbdmt.com

© 2009 Pitney Bowes. All rights reserved.

Pitney Bowes is a mailstream technology company that helps organisations manage the flow of information, mail, documents and packages. Our 36,000 employees deliver technology, service and innovation to more than two million customers worldwide. The company was founded in 1920 and annual revenues now total \$6.4 billion. More information is available at www.pb.com.